

'Dia Tracer Interface' Program for VisionWeb

INSTRUCTIONS

Setting Up Your PC and Install 'Dia Tracer Interface' Program

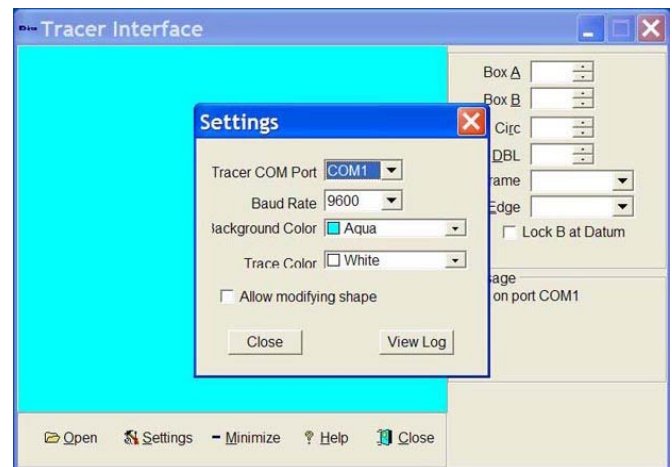
1. Set up the serial port (COM port) on your PC as follows, by accessing the "My Computer" → "Properties", "Hardware" → "Device Manager" → "Ports (COM & LPT)" → "Communication Port (COM 1)" → "Properties" → "Port Setting"

Bits per second (Baud rate): **9600**
Data bits: **8**
Parity: **None**
Stop bits: **1**
Flow control: **None**

2. Install the 'Dia Tracer Interface' Program to your PC by downloading and executing the file "setup.exe".

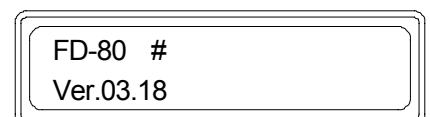
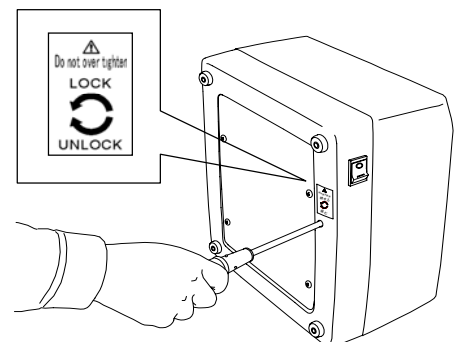
[NOTE] Our 'Dia' Tracer Interface' Program is compatible with 'Windows XP', 'Windows Vista' and 'Windows 7'. However, for opening the "Help" function on the main window in another environment than Windows XP, please refer to the following 'Microsoft Support' information; <http://support.microsoft.com/kb/917607>

3. Open the 'Dia Tracer Interface' by double-clicking its icon on the desktop and click the "Settings" then enter the appropriate COM port number to the "Trace COM Port" (COM port number to which the FD-80 Tracer is connected) and the '9600' to the "Baud Rate" as shown in the right figure. It is advisable not to tick the "Allow modifying shape" to avoid changing the trace data accidentally.



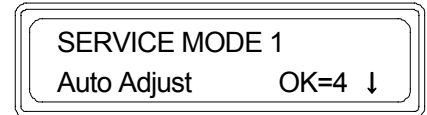
Setting Up Your FD-80 Tracer

1. First completely release the internal moving mechanism from the immobilizing system. Lean down the FD-80 backward, insert the Phillips screwdriver to the position shown in the right figure, and turn it CLOCKWISE continuously and completely until it stops turning.
2. Turn on the power of the FD-80 and check to make sure that the program version number 'Ver.03.xx' is once indicated in the display window as shown in the right figure. If it shows a number 'Ver.01.xx' however, the current program has to be replaced with a Version '03.xx' that is compatible with the VCA/OMA data communication standards. Contact our official distributor, from whom you purchased your FD-80.

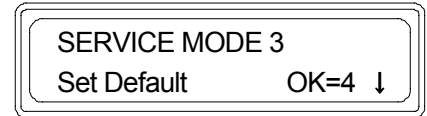


3. In the default setting program, set the “**Frame type**” selection to ‘**OFF**’ and the “**Initialization**” mode to ‘**Non initialization**’ in accordance with the procedures below:

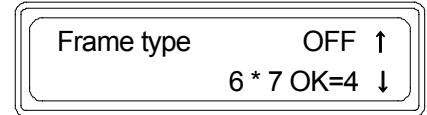
a) Keep up pressing **STOP** button for approx. 3 seconds until the "SERVICE MODE 1" appears on the screen as shown in the right figure.



b) Press **↓** button intermittently until the "SERVICE MODE 3" appears as shown in the right 2nd figure, then press **∞** button.

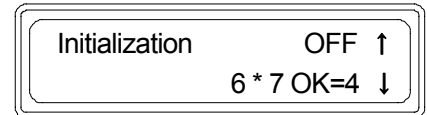


c) Press **↓** button intermittently until the “Frame type OFF/(ON)” appears as shown in the right 3rd figure.



d) If the "Frame type ON" (Frame type selectable) is now displayed on the screen, alter it to the "Frame type **OFF**" (= Frame type not selectable) by pressing **−** button.

e) Next, press **↓** button once again, and the "Initialization **OFF**" will appear on the screen as shown in the right 4th figure. However if "Initialization ON" (= Preset initialization) is now displayed on the screen, alter it to the "Initialization **OFF**" (= Non initialization) by pressing **−** button.



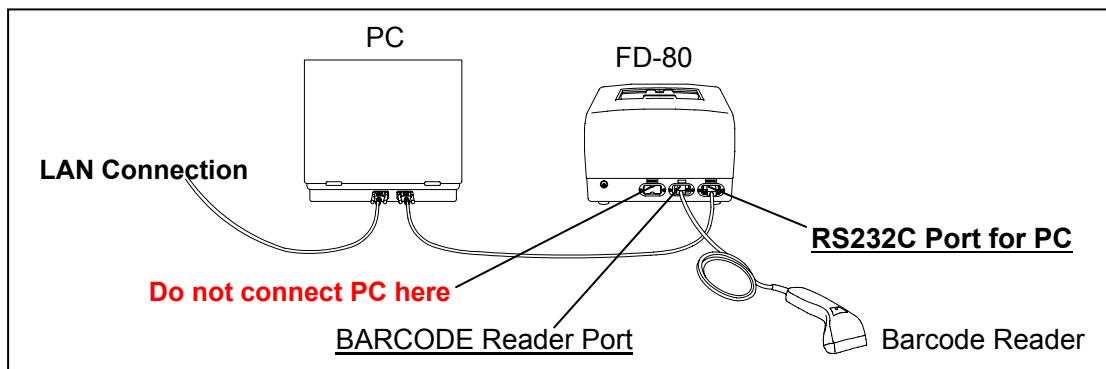
f) Finally press **∞** button, and the message "Saving existing setting?" will appear, then press the **∞** button once again to save and exit the setting.

4. Before beginning operation of FD-80 practically, **perform the “5.1.1 Auto Adjustment by Frame Template” and the “5.1.2 Auto Adjustment by Lens Template” in a few times each** in accordance with the procedures in the “5.1 AUTO ADJUSTMENT OF INSTRUMENT” on Page 5-2 of the Users Instruction Manual attached to your FD-80.


Connecting FD-80 Tracer to PC

1. For connecting the FD-80 to the PC, be sure to connect our accessory serial interface cable to the “RS232C” port socket **located outside** of the back of the FD-80 as shown in the following figure. The inside socket is not for the PC but our edging machines normally.

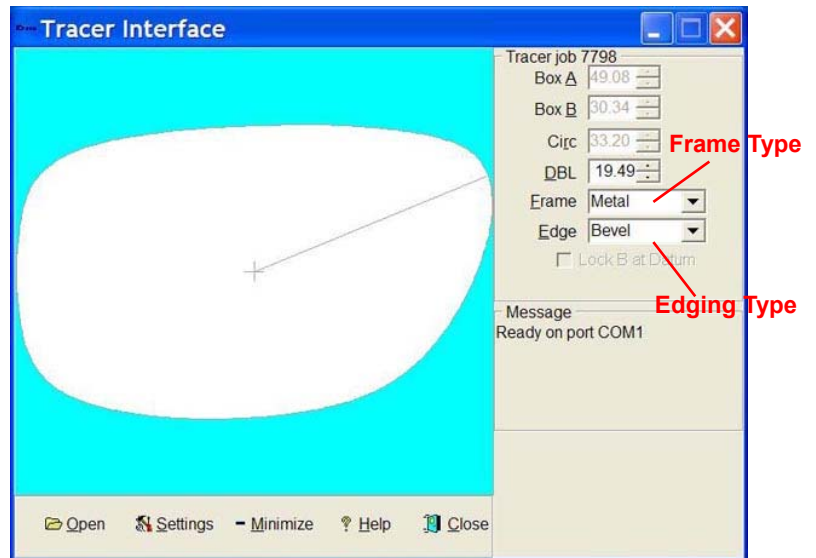
2. Connect the barcode reader (barcode scanner) to the “BARCODE” port of the FD-80 shown in the following figure after removing the metal cover plate from this port.




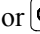
Uploading Trace Data to PC

1. Start the 'Dia Tracer Interface' Program.
2. Set a frame onto the FD-80 and trace its both eyes by pressing  button in accordance with the procedures "4.1 FRAME TRACING PROCEDURES" on Page 4-1 of the Users Instruction Manual attached to your FD-80.

3. Read a barcode with the barcode reader connected to the FD-80, and the trace data (both eyes individual data) will be uploaded to the 'Dia Tracer Interface' Program as shown in the right figure and stored in its "traces" directory with the barcode number. (The "traces" directory is normally in the "Dia Vision Web" folder located in the "Program Files" in case of Widows XP.)



4. Select the Frame Type and Edging Type from those pull-down menus and enter them to the 'Dia Tracer Interface' Program as shown in the right figure.

5. In case of tracing a demo lens (sample lens), pattern or one side eye of a frame, press  or  button according to the 'Side' of the objective lens or pattern (see the "4.2 LENS/PATTERN TRACING PROCEDURES" on Page 4-3 of the Users Instruction Manual). If the Right demo lens is traced for example, the FD-80 will also automatically create its mirror image for the Left eye and upload both eyes data to the PC. In such a one side eye tracing, after the trace data is uploaded to the 'Dia Tracer Interface' Program, be sure to manually input the DBL of the frame to the box "DBL" on the same window as shown in the above figure.

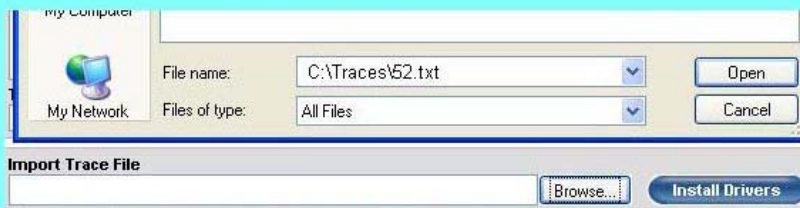
Uploading Trace Data to VisionWeb

1. For uploading the trace data stored in the 'Dia Tracer Interface' Program to the VisionWeb program, follow the procedures described below.

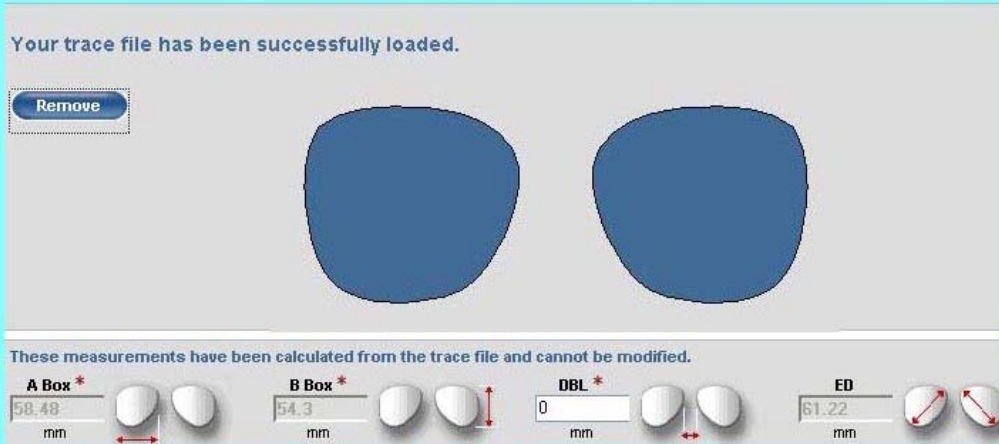
- Log into Vision Web and begin entering an order
- When you are at the frame trace area, click the Browse button next to **Import Trace File**
- Press and hold the CTRL key and press the V key (i.e. a Windows Paste) and then click Open

The shape will now appear in the Vision Web order.





Choose File window opens after clicking **Browse**. Press **CTRL-V** to paste the filename and click **Open**.



The order now has the trace data and displays the shape

If you need to retrace or remove the trace from the order, simply click the Remove button in the Vision Web order screen and either re-trace the frame or continue with the order without a trace.

NOTE: The trace files are stored in a directory called traces, located one subdirectory level below the install directory for this program. When clicking the Browse button, you may optionally navigate to this directory and attach the appropriate file. Using CTRL-V is much easier, however.

Click on the screen shot below to learn more about how to use this program.

